

StepRight

Premium Equine Feed®



Product Guide

The Step Right Premium Equine Feed program delivers proven nutrition to horses for a lifetime

The Step Right Premium Equine Feed® program was designed to match the diverse needs of horses through every stage and level of activity in their life. Using a unique blend of nutrients, and fortifying each product with: IntelliBond® and Optimin® trace minerals, pre and probiotics, organic selenium yeast, biotin, vitamin E, and our blend of natural enhancements, the Step Right program will optimize the performance of your horse.

Broodmares & Growing Horses

Broodmares & foals



Optimizes development of growing horses



Mature Horses

Involved in light to moderate exercise



When forage quality &/or quantity is limited



Do
min
exe



Each of the Step Right feeds has been carefully formulated by equine nutritionists who consider the individual needs of each horse based on their age and level of activity. When you select Step Right, you get much more than what comes in the package. Our nutritional experts are available to ensure you have the right feed, suited to optimize the performance of your horse. Our years of experience in equine nutrition allow us to stand confidently behind our products.

Below is an easy-to-use chart to help you select the right feed for your horse. More details on each product are on the pages within this guide.



The Step Right Difference

Advanced Nutrition for Your Equine Companion

Step Right is excited to introduce an evolution in the way we provide nutritionally balanced diets for our equine partners. All Step Right feeds now include Trouw Nutrition's IntelliBond® and Optimin® trace minerals. These trace minerals have been developed to optimize bioavailability, ensuring that your horse has access to vital nutrients when they need them the most.

We continue to fortify every feed with biotin, prebiotics, selenium, a full complement of B vitamins; and now we are pleased to include probiotics.

Extruded Feed — Highly Digestible Nutrition

Extruded feed is created through a process called extrusion. This process cooks ingredients under pressure with high temperature steam for a short period of time. The feed is then pushed through a die, which gives it a unique and uniform shape. There are many benefits to feeding extruded horse feeds:



- Improved digestibility and energy availability which means a healthier horse with less feed required.
- Improved nutrient absorption in the small intestine.
- Extruded feeds encourage chewing and saliva production. Saliva is essential for preventing gastric ulcers because it acts as a buffer to stomach acid.
- Less dust and fines means more feed in the bag with less waste and more nutrients utilized by the horse.

SmartStep BeneFit Pak™

Our SmartStep BeneFit Pak fills in where the nutrients leave off, assisting the horse with the challenges of life by modifying the fatty acid composition of the diet and providing additional antioxidants. These additives help horses cope with varied life challenges and stresses like hard work on the ranch, competition, changing environments, hygiene and aging.

We have fortified every Step Right Premium Equine product with organic selenium yeast, non-hydrogenated vegetable oil, flax, turmeric, yucca schidigera, lysine and methionine.

Smart Minerals

IntelliBond® Minerals

Trouw Nutrition's IntelliBond products are the first line of hydroxy trace minerals



IntelliBond®
a Selko product

for use in animal feeds. They feature high bioavailability and low environmental impact. IntelliBond minerals have an OH group that creates a strong covalent bond with the mineral. These “smart bonds” help protect the mineral in the feed and the upper digestive tract, allowing for less reactivity and targeted availability. Simply put, IntelliBond minerals are available when and where they are needed the most.

IntelliBond's hydroxy trace minerals also feature our patented OptiSize™ Large Particle Technology. Trace minerals created with this technology offer benefits that traditionally formulated trace minerals cannot. OptiSize Large Particle Technology is the best way to ensure trace minerals are evenly distributed in feed.



Optimin® Organic Trace Minerals

Optimin is Trouw Nutrition's full range of organic trace minerals, developed by animal nutrition experts.

They are FAMI-QS certified, meaning quality controls are performed on every batch ensuring quality, safety and performance. Due to the high quality of ingredients and excellent production process, Optimin trace minerals are easily absorbed by active transport mechanisms, which lowers the risk of mineral deficiencies, oxidative stress or competition between minerals for absorption.

Optimin Selenium Yeast works alongside vitamin E to create a cellular antioxidant defense system. It provides a natural form of selenium to help increase immune function, increase stamina, reduce symptoms related to tying-up and increase fertility.

Optimin
Organic trace minerals

All Natural Enhancements

Selenium Yeast

Selenium yeast is an organic form of the trace mineral selenium, and provides an excellent source of highly bioavailable selenium for horses when fed as part of a balanced ration. Research has shown that the uptake of selenium in the digestive tract of the animal is much more efficient when it is fed in the form of selenium yeast.

Prebiotics

Prebiotics help to provide the critical nutritional support needed to optimize digestive function in your horse. Feeds that are not enzymatically digested in the stomach and small intestine of your horse are fermented to energy by beneficial bacteria in the hind gut. Research has shown that these bacteria can benefit from the rich nutrient source provided by the yeast metabolites.

Probiotics

The SmartStep BeneFit Pak now includes live yeast culture probiotics. These have been shown to contribute to better use of energy through increased fibre digestibility, improved detoxification and use of proteins, less inflammatory stress and better blood oxygenation.

Yucca Schidigera

Yucca has been shown to assist in binding excessive ammonia, minimizing oxidative stress, and decreasing inflammatory response. This will aid in increased digestive health, increased immune function, decreased inflammatory diseases and reduced chance of arthritis.



Biotin

Research has shown that supplementing a horse with 15-20mg of biotin daily can have a beneficial effect on hoof wall growth, integrity and tensile strength. If fed at our recommended rates, every Step Right feed provides 20mg of biotin daily – so there's no need to add an expensive farrier's supplement.

Additional Vitamins

Vitamin K, vitamin B₁₂, thiamin, riboflavin, niacin, pantothenate and folacin have been added to help horses in training meet their heightened dietary requirements and to supplement horses that are under stress. B vitamins play an important role in metabolism and general health including energy generation during exercise, antioxidant activity, maintenance of nervous system, ligament integrity, skin and hoof integrity.

Flax

Flax is a rich source of Omega-3 fatty acids which have been shown to improve coat condition, immune function and fertility. Omega-3's have also been known to maintain healthy cell membranes and decrease inflammatory response.

Turmeric

Turmeric is long thought to be a herbal remedy for combating oxidative stress for horses in exercise.





Weight/Unit Measure

Feeding the Perfect Amount of Step Right

Determining just how much feed your horse needs can be a challenge. How many of us have a set of scales out in the barn ready to weigh out the feed? Very few, and to complicate matters, there is no uniform weight for any of the manufactured horse feeds we buy for our horses. They vary depending on whether they are pelleted, textured, or extruded kibble.

It is important to know what your horse is eating, so we have provided a table with the weight per unit of measure for each Step Right feed. That way, whether you use a feed scoop, a coffee can or a yogurt container to measure out feed, you can calculate how much your horse is getting every day. Having an accurate handle on feed intake is the first step in formulating a well thought out, safe ration for your horse.

To determine how many cups of dry feed your measuring device holds, take a kitchen dry measuring cup and count the cups it takes to fill your scoop. Use the table below to determine how many lbs or kgs of feed you are actually providing to your horse each day.

	# of cups in 1 kg	# of cups in 1 lb	# of cups per day (450 kg horse)
Step 1 – Start Right	9.1	4.1	See page 8 for details
Step 2 – Peak Sweet	7.0	3.2	15.8 - 37.8
Step 2 – Peak Extruded	8.5	3.9	19.1 - 38.3
Step 3 – Classic Sweet	8.0	3.6	18.0 - 43.2
Step 4 – Complete Pellet	6.3	2.9	14.2 - 34.0
Step 4 – Complete (RMC)	7.5	3.4	16.9 - 40.5
Step 5 – Maintenance	7.5	3.4	16.9 - 40.5
Step 6 – Senior	7.4	3.4	16.7 - 40.0
Step 7 – Horse Supplement	7.0	3.2	up to 7.0
Step 8 – Hi-Fat	8.0	3.6	up to 20.0
CR - ProFibre Crunch	6.0	2.7	13.5 - 48.6
GAP - GenAPro	6.3	2.8	28.4 - 42.5
Step Right Horse Mineral	200 g/cup (scoop included in bag)		up to 1.25

Measurements are provided as a guide only

Glossary of Symbols

To help you quickly identify the key features and benefits of each Step Right Premium Equine Feed, we have developed some easy to identify illustrations that you can see while you choose the feed that is the most ideal for your equine partner. Look for these icons at the bottom of each product page.



Amino Acids



Biotin



B Vitamins



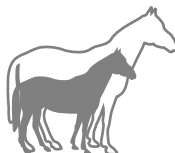
Canadian Alfalfa



**Chelated
Selenium Yeast**



**Forage
Replacer**



Growth



Hard Keeper



Low NSC



Omega 3



Performance



**Pre and Pro
Biotics**



Ration Balancer



**Slow
Consumption**



Trace Minerals

1



Start Right

#12505525

Step 1 - Start Right is an extruded feed designed specifically for lactating broodmares, foals and weanlings.

Benefits:

- Extrusion technology creates a small kibble that is highly digestible and palatable for young horses.
- Excellent for mares in the final stage of gestation and throughout lactation when nutrient demands are highest.

Feeding Instructions:

Feed to lactating broodmares after foaling, and to foals starting at about one week of age, and continue feeding to growing horses up to one year of age. This feed should be offered as a component of a balanced ration, including access to good quality forage and ample access to clean water. For breed-specific feeding recommendations, consult with your veterinarian.

Broodmare:	0.5 - 0.75% of body weight per day
Lactating Mare:	0.75 - 1.0% of body weight per day
Nursing Foal:	0.5 - 1.0% of body weight per day
Weanling Foal (6 months - 200 kg)	0.5 - 1.5% of body weight per day

Feed Analysis:

Crude Protein (min)	16.0%	Zinc	290 mg/kg
Crude Fat (min)	5.0%	Cobalt	0.2 mg/kg
Crude Fibre (max)	8.0%	Selenium (added)	0.5 mg/kg
Sodium (act)	0.4%	Vitamin A (min)	12,000 IU/kg
Calcium (act)	1.0%	Vitamin D (min)	1,800 IU/kg
Phosphorus (act)	0.7%	Vitamin E (min)	150 IU/kg
Magnesium	0.2%	Thiamin	10 mg/kg
Iodine	0.5 mg/kg	Riboflavin	8 mg/kg
Copper	45 mg/kg	Pyridoxine	10 mg/kg
Manganese	190 mg/kg	Biotin	4.5 mg/kg



2 Peak Sweet #12486485



Step 2 - Peak Sweet is a textured, high-energy sweet feed designed for performance and growing horses, stallions and hard keepers. This product is good for horses engaged in heavy exercise, or those requiring additional energy intake for metabolic reasons.

Benefits:

- 14% crude protein, 10% non-hydrogenated fat (from canola oil).
- A highly digestible and palatable diet with optimum starch levels for performance.
- A higher protein, balanced diet that includes Canadian oats.

Feeding Instructions:

450 kg horse	% of body weight	# of kgs	# of cups
Feeding Rate Per Day	0.5% - 1.2%	2.25 kgs - 5.4 kgs	15.8 - 37.8

Feed according to the activity level and condition of the horse. For best results, split grain feedings up to a minimum of two feedings per day. This feed should be offered as a component of a balanced ration, including access to good quality forage and ample access to clean water. For breed-specific feeding recommendations, consult with your veterinarian.

Feed Analysis:

Crude Protein (min)	14.0%	Zinc	300 mg/kg
Crude Fat (min)	10.0%	Cobalt	0.3 mg/kg
Crude Fibre (max)	12.0%	Selenium (added)	0.4 mg/kg
Sodium (act)	0.45%	Vitamin A (min)	13,500 IU/kg
Calcium (act)	1.2%	Vitamin D (min)	1,800 IU/kg
Phosphorus (act)	0.8%	Vitamin E (min)	200 IU/kg
Magnesium	0.25%	Thiamin	10 mg/kg
Iodine	0.5 mg/kg	Riboflavin	8 mg/kg
Copper	45 mg/kg	Pyridoxine	10 mg/kg
Manganese	200 mg/kg	Biotin	4.5 mg/kg



2



Peak Extruded

#12984615



Step 2 - Peak Extruded is a high fat feed best suited for growing and performance horses, stallions and hard keepers. This product is great for horses engaged in heavy exercise, or those requiring additional energy intake for metabolic reasons.

Benefits:

- 14% crude protein, 10% non-hydrogenated fat (from canola oil).
- Extruded product allows for enhanced starch digestibility for hind gut health.
- Feeding 10 lbs per day will provide a horse with 1 lb of supplemental fat in the horse's diet in an easy-to-digest form.
- Extruded feeds encourage chewing and saliva production, which in turn can buffer stomach acid and help to prevent gastric ulcers.

Feeding Instructions:

450 kg horse	% of body weight	# of kgs	# of cups
Feeding Rate Per Day	0.5% - 1.0%	2.25 kgs - 4.5 kgs	19.1 - 38.3

Feed according to the activity level and condition of the horse. For best results, split grain feedings up to a minimum of two feedings per day. This feed should be offered as a component of a balanced ration, including access to good quality forage and ample access to clean water. For breed-specific feeding recommendations, consult with your veterinarian.

Feed Analysis:

Crude Protein (min)	14.0%	Zinc	290 mg/kg
Crude Fat (min)	10.0%	Cobalt	0.3 mg/kg
Crude Fibre (max)	10.0%	Selenium (added)	0.5 mg/kg
Sodium (act)	0.35%	Vitamin A (min)	12,500 IU/kg
Calcium (act)	0.9%	Vitamin D (min)	2,000 IU/kg
Phosphorus (act)	0.7%	Vitamin E (min)	200 IU/kg
Magnesium	0.15%	Thiamin	10 mg/kg
Iodine	0.5 mg/kg	Riboflavin	8 mg/kg
Copper	40 mg/kg	Pyridoxine	10 mg/kg
Manganese	185 mg/kg	Biotin	4.5 mg/kg



3

Classic Sweet #12786365



Step 3 - Classic Sweet is a textured, sweet feed designed for mature horses involved in light to moderate activity.

Benefits:

- A highly digestible and palatable diet containing whole oats, and a fortified supplement pellet.
- Original sweet feed formula for balanced nutrition to help maintain body condition.

Feeding Instructions:

450 kg horse	% of body weight	# of kgs	# of cups
Feeding Rate Per Day	0.5% - 1.2%	2.25 kgs - 5.4 kgs	18.0 - 43.2

Feed according to the activity level and condition of the horse. For best results, split grain feedings up to a minimum of two feedings per day. This feed should be offered as a component of a balanced ration, including access to good quality forage and ample access to clean water. For breed-specific feeding recommendations, consult with your veterinarian.

Feed Analysis:

Crude Protein (min)	12.0%	Zinc	200 mg/kg
Crude Fat (min)	2.5%	Cobalt	0.2 mg/kg
Crude Fibre (max)	12.0%	Selenium (added)	0.3 mg/kg
Sodium (act)	0.35%	Vitamin A (min)	10,000 IU/kg
Calcium (act)	0.85%	Vitamin D (min)	1,500 IU/kg
Phosphorus (act)	0.7%	Vitamin E (min)	150 IU/kg
Magnesium	0.2%	Thiamin	7.5 mg/kg
Iodine	0.4 mg/kg	Riboflavin	5 mg/kg
Copper	40 mg/kg	Pyridoxine	7.5 mg/kg
Manganese	150 mg/kg	Biotin	4 mg/kg



4

Complete Pellet

#12486515



Step 4 - Complete Pellet is a high fibre, pelleted feed designed for mature horses where forage quantity and quality is limited. It can be fed to mature horses as a partial forage replacement.

Benefits:

- A convenient pellet that is palatable and easy to handle.
- Optimum fibre feed for mature horses.
- Well-suited for travel and back country trips.

Feeding Instructions:

450 kg horse	% of body weight	# of kgs	# of cups
Feeding Rate Per Day	0.5% - 1.2%	2.25 kgs - 5.4 kgs	14.2 - 34.0

Feed according to activity level and condition of the horse. Feeding level will vary depending on the size, condition and activity level of the horse. This feed should be offered as a component of a balanced ration, including access to good quality forage and ample access to clean water. For breed-specific feeding recommendations, consult with your veterinarian.

Feed Analysis:

Crude Protein (min)	12.0%	Zinc	290 mg/kg
Crude Fat (min)	2.5%	Cobalt	0.35 mg/kg
Crude Fibre (max)	14.0%	Selenium (added)	0.35 mg/kg
Sodium (act)	0.4%	Vitamin A (min)	10,000 IU/kg
Calcium (act)	1.0%	Vitamin D (min)	1,800 IU/kg
Phosphorus (act)	0.6%	Vitamin E (min)	125 IU/kg
Magnesium	0.2%	Thiamin	10 mg/kg
Iodine	0.5 mg/kg	Riboflavin	8 mg/kg
Copper	50 mg/kg	Pyridoxine	10 mg/kg
Manganese	200 mg/kg	Biotin	4.5 mg/kg



Note: This feed is not recommended for young growing horses or horses engaged in heavy exercise.



4



Complete *Rocky Mountain Crunch* #13348365



Step 4 - Complete Rocky Mountain Crunch is a high fibre kibble designed for mature horses where forage quantity and quality is limited. It can be fed to mature horses as a partial forage replacement.

Benefits:

- A convenient, extruded kibble that is palatable and easy to handle.
- Optimum fibre feed for mature horses.
- Well-suited for travel and back country trips.
- Extruded feeds encourage chewing and saliva production, which in turn can buffer stomach acid and help to prevent gastric ulcers.

Feeding Instructions:

450 kg horse	% of body weight	# of kgs	# of cups
Feeding Rate Per Day	0.5% - 1.2%	2.25 kgs - 5.4 kgs	16.9 - 40.5

Feed according to activity level and condition of the horse. Feeding level will vary depending on the size, condition and activity level of the horse. This feed should be offered as a component of a balanced ration, including access to good quality forage and ample access to clean water. For breed-specific feeding recommendations, consult with your veterinarian.

Feed Analysis:



Crude Protein (min)	14.0%	Zinc	290 mg/kg
Crude Fat (min)	2.0%	Cobalt	0.35 mg/kg
Crude Fibre (max)	14.0%	Selenium (added)	0.3 mg/kg
Sodium (act)	0.4%	Vitamin A (min)	10,000 IU/kg
Calcium (act)	1.0%	Vitamin D (min)	1,800 IU/kg
Phosphorus (act)	0.5%	Vitamin E (min)	125 IU/kg
Magnesium	0.2%	Thiamin	10 mg/kg
Iodine	0.5 mg/kg	Riboflavin	8 mg/kg
Copper	50 mg/kg	Pyridoxine	10 mg/kg
Manganese	200 mg/kg	Biotin	4.5 mg/kg

Note: This feed is not recommended for young growing horses or horses engaged in heavy exercise.



5



Maintenance

#13596445



Step 5 - Maintenance is an extruded, high fibre feed designed specifically for mature horses requiring less dietary energy and protein.

Benefits:

- Large extruded kibble encourages horses to eat slowly.
- Very palatable.
- Makes a great treat.
- Extruded feeds encourage chewing and saliva production, which in turn can buffer stomach acid and help to prevent gastric ulcers.

Feeding Instructions:

450 kg horse	% of body weight	# of kgs	# of cups
Feeding Rate Per Day	0.5% - 1.2%	2.25 kgs - 5.4 kgs	16.9 - 40.5

Feed according to activity level and condition of the horse. Feeding level will vary depending on the size, condition and activity level of the horse. This feed should be offered as a component of a balanced ration, including access to good quality forage and ample access to clean water. For breed-specific feeding recommendations, consult with your veterinarian.

Feed Analysis:

Crude Protein (min)	10.0%	Zinc	295 mg/kg
Crude Fat (min)	4.0%	Cobalt	0.35 mg/kg
Crude Fibre (max)	10.0%	Selenium (added)	0.3 mg/kg
Sodium (act)	0.4%	Vitamin A (min)	8,000 IU/kg
Calcium (act)	0.8%	Vitamin D (min)	2,000 IU/kg
Phosphorus (act)	0.5%	Vitamin E (min)	70 IU/kg
Magnesium	0.2%	Thiamin	10 mg/kg
Iodine	0.5 mg/kg	Riboflavin	8 mg/kg
Copper	45 mg/kg	Pyridoxine	10 mg/kg
Manganese	185 mg/kg	Biotin	4.5 mg/kg



Note: This feed is not recommended for young growing horses or horses engaged in heavy exercise.



6



Senior

#12486535



Step 6 - Senior is designed to help your horse feel young again. This feed is a blend of pellets and extruded kibble created to address the unique dietary challenges faced by senior horses, hard keepers or mature horses having difficulty maintaining condition.

Benefits:

- A blend of pellets and extruded kibbles allows for easy consumption and nutrient absorption by senior horses, even those with dental issues.
- Formulated with ingredients chosen specifically for a senior horse diet.

Feeding Instructions:

450 kg horse	% of body weight	# of kgs	# of cups
Feeding Rate Per Day	0.5% - 1.0%	2.25 kgs - 5.4 kgs	17.5 - 35.0

Feed according to activity level and condition of the horse. Feeding level will vary depending on the size, condition and activity level of the horse. This feed should be offered as a component of a balanced ration, including access to good quality forage and ample access to clean water. For breed-specific feeding recommendations, consult with your veterinarian.

Feed Analysis:

Crude Protein (min)	14.0%	Zinc (act)	250 mg/kg
Crude Fat (min)	4.5%	Cobalt (act)	0.18 mg/kg
Crude Fibre (max)	12.0%	Selenium (added)	0.35 mg/kg
Sodium (act)	0.4%	Vitamin A (min)	12,000 IU/kg
Calcium (act)	1.0%	Vitamin D (min)	2,000 IU/kg
Phosphorus (act)	0.6%	Vitamin E (min)	125 IU/kg
Magnesium (act)	0.2%	Thiamin (min)	10 mg/kg
Iodine (act)	0.45 mg/kg	Riboflavin (min)	7 mg/kg
Copper (act)	40 mg/kg	Pyridoxine (min)	7 mg/kg
Manganese (act)	150 mg/kg	Biotin (min)	4.5 mg/kg



7

Horse Supplement #12834405

Step 7 - Horse Supplement is a low inclusion balancer for horses consuming non-complete feeds such as oats or COB (corn, oats, barley). It is also suitable for horses on pasture, over-conditioned horses, and for horses with low energy requirements.

Benefits:

- A pelleted supplement that supplies trace minerals and fat-soluble vitamins safely and conveniently.
- Cost-effective way to ensure the nutritional needs of each horse.
- Well-suited for stables offering a complete nutritional program.

Feeding Instructions:

In general, feed according to the following schedule, adjusting for size, age and overall body condition of the horse. For breed-specific feeding recommendations, consult with your veterinarian.

Broodmare:	up to 1.0 kg/day
Mature Horse (450 kg):	up to 1.0 kg/day
Growing Horse :	0.25 kg supplement/100 kg of body weight

Feed Analysis:

Crude Protein (min)	12.0%	Zinc (act)	600 mg/kg
Crude Fat (min)	4.0%	Cobalt (act)	0.4 mg/kg
Crude Fibre (max)	8.0%	Selenium (added)	3.0 mg/kg
Sodium (act)	0.6%	Vitamin A (min)	30,000 IU/kg
Calcium (act)	2.0%	Vitamin D (min)	5,500 IU/kg
Phosphorus (act)	1.0%	Vitamin E (min)	600 IU/kg
Magnesium (act)	0.25%	Thiamin (min)	18 mg/kg
Iodine (act)	1.0 mg/kg	Riboflavin (min)	50 mg/kg
Copper (act)	200 mg/kg	Pyridoxine (min)	50 mg/kg
Manganese (act)	375 mg/kg	Biotin (min)	20 mg/kg



8



Hi-Fat

#12486555



Step 8 - Hi-Fat is a cool energy feed that helps the horse get the work done. It is designed for hard-working performance horses or horses that require fat-sourced energy for weight management.

Benefits:

- This high fat and fibre but low NSC diet is a great option for many senior, performance and even metabolically challenged horses.
- Step 8 Hi-Fat is ideal for helping horses maintain their body condition over winter.
- Fat sources include canola oil, ground flax and rice bran – chosen to provide an optimal ratio of Omega 3:6 fatty acids.
- Extruded feeds encourage chewing and saliva production, which in turn can buffer stomach acid and help to prevent gastric ulcers.

Feeding Instructions:

450 kg horse	% of body weight	# of kgs	# of cups
Feeding Rate Per Day	Up to 0.5%	Up to 2.5 kgs	up to 20.0

Feed in at least two separate feedings per day, according to the activity level and condition of the horse. This provides your horse with approximately 0.45 kg (1 lb) of supplemental fat per day in a safe, convenient form. This feed should be offered as a component of a balanced ration, including access to good quality forage and ample access to clean water. For breed-specific feeding recommendations, consult with your veterinarian.

Feed Analysis:

Crude Protein (min)	12.0%	Zinc	275 mg/kg
Crude Fat (min)	20.0%	Cobalt	0.3 mg/kg
Crude Fibre (max)	18.0%	Selenium (added)	0.5 mg/kg
Sodium (act)	0.35%	Vitamin A (min)	13,000 IU/kg
Calcium (act)	1.0%	Vitamin D (min)	2,000 IU/kg
Phosphorus (act)	0.6%	Vitamin E (min)	200 IU/kg
Magnesium	0.25%	Thiamin	10 mg/kg
Iodine	0.5 mg/kg	Riboflavin	8 mg/kg
Copper	45 mg/kg	Pyridoxine	10 mg/kg
Manganese	190 mg/kg	Biotin	10 mg/kg



CR



ProFibre Crunch #13717675



ProFibre Crunch is a high fibre, pellet and extruded kibble complete feed blend for horses requiring special dietary needs. This feed is manufactured with minimal starch, and is ideal for horses with metabolic issues.

Benefits:

- A safe feed option for horses that have metabolic disorders, Cushings disease or have foundered (< 10% NSC).
- Provides energy in the form of digestible fibre sources including soy hulls, alfalfa and beet pulp.
- Fortified with flax, an excellent natural source of Omega 3 fatty acids.

Feeding Instructions:

450 kg horse	% of body weight	# of kgs	# of cups
Feeding Rate Per Day	0.5% - 1.8%	2.25 kgs - 8.1 kgs	13.5 - 48.6

Feed to mature horses or young horses over one year of age with metabolic issues and/or sugar sensitivities. This feed can safely replace a portion of the horse's daily intake of hay, thereby significantly reducing its intake of fructan (a form of sugar found in most cool season grass hays). It should be offered as a component of a balanced ration, including access to good quality forage and ample access to clean water. For breed-specific feeding recommendations, consult with your veterinarian.

Feed Analysis:

Crude Protein (min)	14.0%	Zinc	250 mg/kg
Crude Fat (min)	5.0%	Cobalt	0.25 mg/kg
Crude Fibre (max)	25.0%	Selenium (added)	0.35 mg/kg
Sodium (act)	0.4%	Vitamin A (min)	11,000 IU/kg
Calcium (act)	1.3%	Vitamin D (min)	2,000 IU/kg
Phosphorus (act)	0.7%	Vitamin E (min)	120 IU/kg
Magnesium	0.25%	Thiamin	9 mg/kg
Iodine	0.4 mg/kg	Riboflavin	7 mg/kg
Copper	45 mg/kg	Pyridoxine	9 mg/kg
Manganese	150 mg/kg	Biotin	5 mg/kg



GAP GenAPro #13457425



GenAPro is a high fibre, low sugar, low starch complete feed that can be fed as a partial or total hay replacer. This alfalfa based product is well suited for travel or when forage quality and/or quantity is limited.

Benefits:

- Low sugar and starch (<10% NSC)
- Ideal for competition horses that travel frequently and require a consistent quality forage.
- Higher protein levels are consistent with what would be provided in hay, which is important for growth, performance, and maintaining muscle condition.
- Mini cube feed form encourages chewing and saliva production, which in turn can buffer stomach acid and help to prevent gastric ulcers.

Feeding Instructions:

450 kg horse	% of body weight	# of kgs	# of cups
Feeding Rate Per Day	1.0 - 1.5%	4.5 kgs - 6.75 kgs	28.4 - 42.5

Feed in at least two separate feedings per day to growing and mature horses, according to the activity level and condition of the horse. This feed can safely replace a portion of the horse's daily intake of hay. GenAPro should be offered as a component of a balanced ration, including access to good quality forage and ample access to clean water. For breed-specific feeding recommendations, consult with your veterinarian.

Feed Analysis:

Crude Protein (min)	15.5%	Zinc	275 mg/kg
Crude Fat (min)	3.5%	Cobalt	0.2 mg/kg
Crude Fibre (max)	21.0%	Selenium (added)	0.3 mg/kg
Sodium (act)	0.6%	Vitamin A (min)	9,000 IU/kg
Calcium (act)	1.4%	Vitamin D (min)	1,500 IU/kg
Phosphorus (act)	0.4%	Vitamin E (min)	75 IU/kg
Magnesium	0.2%	Thiamin	13.5 mg/kg
Iodine	0.5 mg/kg	Riboflavin	13.5 mg/kg
Copper	45 mg/kg	Pyridoxine	26 mg/kg
Manganese	200 mg/kg	Biotin	4.5 mg/kg



Step Right Horse Mineral

#12859875

#13358105

Step Right Horse Mineral is a complete vitamin and mineral supplement in a concentrated loose formulation. It is intended for horses consuming non-complete feeds such as oats or COB (corn, oats and barley). This product has been formulated for superior equine performance, improved hoof health and growth, and improved immune function.

Benefits:

- A safe, convenient option to ensure your horse is getting well supplied with essential trace minerals and fat-soluble vitamins, even if they are not consuming a lot of concentrated feeds.
- Suitable for broodmares, horses on pasture, and over-conditioned horses.
- Cost-effective to top dress any horse's non-fortified feeds, or mix 50/50 with loose salt and feed free choice.

Feeding Instructions:

In general, feed according to the following schedule, adjusting for size, age and overall body condition of the horse. For breed-specific recommendations, consult with your veterinarian. Always ensure ample access to clean water for optimum health.

Broodmare: (450 kg):	up to 250 g/day
Mature Horse (450 kg):	up to 250 g/day
Growing Horses:	50 g mineral/100 kg of body weight

Feed Analysis:

Sodium (act)	3.0%	Selenium (added)	12 mg/kg
Calcium (act)	10%	Vitamin A (min)	120,000 IU/kg
Phosphorus (act)	6.4%	Vitamin D (min)	22,000 IU/kg
Magnesium (act)	1.25%	Vitamin E (min)	2,400 IU/kg
Iodine (act)	10 mg/kg	Thiamin (min)	80 mg/kg
Copper (act)	890 mg/kg	Riboflavin (min)	200 mg/kg
Manganese (act)	1,400 mg/kg	Pyridoxine (min)	200 mg/kg
Zinc (act)	2,400 mg/kg	Biotin (min)	80 mg/kg
Cobalt (act)	10 mg/kg		





Supplements & Minerals FAQ

Where Do Supplements and Minerals Fit into My Horse's Diet

Depending on the quality of available forage and the nutritional content of your horse's feed, they may be deficient in certain vitamins and minerals. Equine supplements and minerals are a way to provide horses with essential vitamins and minerals in a compact, convenient package. When determining which supplement or mineral to use, it is important to understand what nutrients your horse is getting from their forage and other feeds.

I feed high quality hay. Do I still need supplements?

In many cases, high quality hay should provide your horse with sufficient energy and protein, but may not provide sufficient trace minerals in the correct ratios. It can be challenging to provide your horse with sufficient quantities of the fat-soluble vitamins A, D and E. Stored forages are low in fat-soluble vitamins, so a complete diet for any horse, regardless of nutrient requirements, should always include supplemental fat-soluble vitamins.

Does my horse need any supplements if they get lots of grain?

Feeds such as beet pulp, COB, oats or hay cubes often don't contain any supplemental vitamins and minerals. Horses consuming these as sources of additional energy and protein, or consuming minimal amounts of manufactured fortified feeds often require supplemental vitamins and minerals from other sources. Manufactured feeds such as sweet feed, extruded kibbles and complete pellets do contain supplemental vitamins and minerals, but they need to be fed in sufficient quantities to provide enough supplemental vitamins and minerals. In these situations a ration balancer or mineral can be considered to "top up" required vitamins and minerals without looking to include substantial caloric intake.

Chelated, Organic and Hydroxy Bonded minerals. What is the difference?

Trace mineral nutrition can be a tricky balancing act. Complexing and chelating trace minerals is when the mineral is processed to ensure bioavailability. Trouw Nutrition's IntelliBond products are the first line of hydroxy trace minerals for use in animal feeds and support high levels of bioavailability. IntelliBond minerals have an OH group that creates a strong covalent bond with the mineral. These "smart bonds" help protect the mineral in the feed and the upper digestive tract, allowing for less reactivity and targeted availability. Simply put, IntelliBond minerals are available when and where they are needed the most. Research has shown that providing minerals from varied sources, including both inorganic and complexed sources can optimize their uptake in the lower digestive tract, in turn improving your horse's ability to meet their trace mineral needs through their diet. Having Trouw Nutrition's proprietary Intellibond minerals helps to support mineral availability without increasing the volume fed!



Fat in your Horses' Diet

Horses digest fat primarily in the small intestine resulting in varied degrees of digestibility depending on the fat source. Fats found in forages are absorbed less compared to fats sourced from oil. Fat contains 2.25 times the calories per unit of weight in comparison to carbohydrates (starch and sugar).

Fats can be a safe and effective choice for increasing energy in the diets of performance horses or horses with metabolic issues. The safety and efficacy of feeding fat as an energy source for horses has been well documented in peer reviewed research. Fat should be fed in small meals to ensure good digestion. When considering the substitution of fat for non-structural carbohydrates as a calorie source, it appears to provide some benefits to horses prone to gastric ulcers. There is also some research surrounding mature horses consuming high-fat meals, instead of meals high in non-structural carbohydrates, in these instances researchers saw a decrease in both blood glycemic and insulinemic responses.

Step Right Premium Equine Feed includes fat for the following objectives:

1. Deliver safe 'cool' calories for energy
2. Offer a supply of Omega 3 and Omega 6 fatty acids to the horse. Omega 3 fatty acids in particular can be limited in equine diets
3. Dietary fats (triglycerides) are a concentrated source of dietary energy that provides essential fatty acids which are able to carry the fat-soluble vitamins A, D, E, and K. Since these vitamins are hydrophobic they need fats to help transport them through the small intestine

Omega 3 and Omega 6 fatty acids

Omega 3 and Omega 6 fatty acids are part of a group of nutrients called 'essential polyunsaturated fatty acids. They are critical for several metabolic functions in horses. While diets that contain sufficient quantities of Omega fatty acids are important, consideration must be taken of the ratio of essential fatty acids provided by feed ingredients for optimum performance.

Balancing Omega fatty acids

Equine diets commonly utilize vegetable fat sources, the most common being palm fat or hydrogenated vegetable fat. These fats provide energy, but do not provide an optimum ratio of essential fatty acids. Soy and corn oil provide high quality fat for energy, but a less desirable ratio of Omega fatty acids. The best fats to use in feed manufactured for horses should have a desirable ratio of Omega 3 to Omega 6 fatty acids.

Canola oil is a superior fat source for use in equine diets in terms of digestibility, manufacturing stability, palatability and fatty acid ratio. Step Right Premium Equine Feeds are manufactured utilizing Canadian canola oil as the primary fat source. All fat sources used are non-hydrogenated vegetable oils that are selected to provide a good ratio of Omega 3 to Omega 6 fatty acids.

The Importance of Fibre

Crude fibre and digestible fibre

Fiber is an important component of your horse's diet and can be largely sourced in the forages we feed. It is necessary for maintaining a healthy hindgut because of the necessary nutrients that regulate the bacterial population. When considering what fiber is, the definition describes it as a collection of carbohydrates such as cellulose, pectin, and lignin that are resistant to enzymatic digestion in the small intestine. Horses have a large and well-developed capacity for the microbial fermentation of these complex carbohydrates, which makes fiber in their diet vital. Fiber is not considered a function of a forage's stem length; it is a measure of these specific carbohydrate fractions that exist in pellets as they do in long-stem hay. This creates the possibility to meet a horse's need for fiber feeding a forage replacer in pelleted form or in traditional forage forms.

The difference between crude fiber and digestible fiber

The term crude fiber is used to describe the complex carbohydrates in manufactured feed. However, it does not describe the digestibility of the complex carbohydrates. Digestible fiber is used to describe carbohydrates that provide safe hindgut digestible energy.

It is important to know what the source of fiber is in any horse feed when there is a 'high fiber' claim. If the fiber provided in the feed can't be utilized in the digestive tract of your horse it doesn't provide any nutritional advantage.

High crude fiber, doesn't always translate to the best choice

Not all horses do better on a high crude fiber feed. In diets where nutrient density and digestibility are important, a high level of crude fibre in a complete feed could be counter-productive. For example, a starter feed such as Step 1 - Start Right is intended to complement the diets of pre-weaned foals with important essential nutrients, and facilitate the transition of the foal from a milk diet to a solid food diet. Step 1 - Start Right has an optimum level of high quality protein that is balanced for amino acids. It also has high quality carbohydrate sources utilizing grains for starch and sugars such as glucose, fructose and lactose. This ensures the nutrients provided are readily digestible in the foregut. Foals have an immature cecum, or hind gut, and very limited capacity to utilize feeds with lower digestibility.

Providing foals with access to pasture, quality hay and a good starter feed enhances the development of the hind gut and ensures good nutrient utilization for optimum growth. Starter feeds that are too high in crude fibre dilute nutrient density and do not enhance foal growth or development.





Feeding Protein to Horses

Crude protein

Crude protein is a measurement of the total protein content of a feed, but does not indicate the protein quality. Most of the crude protein in equine diets comes from forages. Hay, along with pasture quality and maturity, will influence the protein content of a horse's diet significantly.

Amino acids and the importance of limiting amino acids

All protein in equine diets is comprised of 'building blocks' called amino acids, which are important for the development and repair of bones, muscles, and virtually all of the body's soft tissues. Amino acids are the foundation of many important metabolic functions. Some are in plentiful supply in the feeds our horses eat, and some are not. The ones that are not are called 'limiting' amino acids. The horse will only perform as well as the most limiting amino acid. Lysine and methionine are examples of limiting amino acids.

It is important that limiting amino acids be fed in the correct ratio to ensure optimum utilization. It is possible to feed a diet that meets minimum requirements for crude protein without being balanced for 'limiting' amino acids. Increasing crude protein levels in diets for weanlings and growing horses without ensuring the protein is of high quality and balanced for limiting amino acids may produce undesired growth and development results, and can lead to issues including OCD (osteochondritis dissecans) and phytitis.

Performance horses require high quality protein in their diets. The bodies of healthy equine athletes are constantly undergoing muscle building and repair. A diet that is poorly balanced for limiting amino acids is not likely to support optimum performance.

Diets for senior horses are most successful when balanced for protein quality. Loss of top line and reduction in immune function and hair coat quality often seen in senior horses can be partially related to a shortfall in the dietary intake of essential amino acids.

Balancing protein and amino acids

The best equine diets are those that provide adequate but not excessive levels of high quality protein and a balanced ratio of amino acids. Feeding diets with excessive levels of protein without ensuring that the amino acids are balanced can put undue stress on any horse but in particular horses that are growing, performance horses or metabolically challenged horses.

All Step Right Premium Equine Feeds provide crude protein and amino acid levels that have been determined by research to be appropriate for the type of horse as specified by the tag.



Sugar in your Horses' Diet

Sugars in horse feed

Sugar or 'water soluble carbohydrate' (WSC) intake in equine diets has become a popular topic for discussion. Technically, WSC includes the complex sugar, fructan and the simple sugars, fructose and glucose. WSC is characterized as a carbohydrate that can be digested rapidly to glucose in the foregut, or fermented to energy in the hind gut. Non-structural carbohydrates (NSC) are equal to the WSC and starch present in the feed. NSC are an excellent energy source for horses, and can be metabolized in the horse's body with the assistance of insulin. When fed in excess of the horse's energy needs NSC are stored as body fat. We often talk about NSC levels in feed as opposed to just WSC, since we want to consider both sugar and starch content of a feed for horses with a metabolic illness or sugar sensitivity. You won't find any added 'table sugar' in any Step Right Premium Equine Feed, but most ingredients used in horse feeds contain NSC.

Benefits of Starch and Sugar

Horses that are in training or performing moderate to heavy activities will benefit from a feed containing starch and sugars. Feeds with a higher NSC level can efficiently 'load' the muscles of the equine athletes with glycogen for easily accessible energy for performance. Pleasure and trail horses will also utilize sugar and starch energy in their regular activities.

Managing NSC in the Diet

When working with overweight horses it is necessary to consider the total NSC of a diet (feed and forage), as these horses can be at a higher risk of metabolic illnesses such as Insulin Resistance (IR), Equine Metabolic Syndrome (EMS) and health issues including PPID (the technical name for Cushing's disease).

Low-starch feeds are not appropriate for all horses, but those who are easily excitable, obese, insulin resistant or diagnosed with muscle disorders or hindgut acidosis are all obvious candidates. Some horses cannot hold their weight when on a low-starch diet and may need the extra energy provided by starches; while others might maintain an adequate weight, but lack energy when asked to perform.

For metabolically challenged horses, we would look for low NSC feeds, which are commonly manufactured in the form of extruded kibbles or pellets. Step 8 Hi- Fat and ProFibre Crunch are low in NSC, and you may also consider a low-inclusion vitamin and mineral supplement, such as Step 7 - Horse Supplement or Step Right Horse Mineral.

Consider your Forages

It is important to remember that your forage contains NSC as well, since horses generally have a diet that contains more forage than concentrated feed. If your horse requires a low NSC feed, evaluating your forage for NSC is a necessary step. Ask your hay supplier for a copy of their forage test results, or have your own hay tested.

Love your Horse, Love your Feed

Nicky & Norman Wylie - White House Stables, North Saanich, BC

Breeding and raising marketable thoroughbreds is a risky endeavour but I am certain that optimum nutrition for the broodmares and their offspring results in strong athletes that reach their genetic potential.

I totally trust the Step Right feeds to completely cover all the enormous and various nutritional requirements; they have it all figured out for me.

The results, as recorded in starts and earnings, allow us to sell with confidence and watch with pride.



Stanz In Command

Telsec Farms, Calgary, AB

At Telsec Farms we have a variety of different horses who need a variety of different feed plans. Ranging from senior horses, weanlings, broodmares to competitive show jumpers, the Step Right program has provided something for everyone. As our horses are constantly changing, growing and becoming more or less fit, the Step Right program has a feed to match with their needs. No matter the age, breed, or fitness program of our horses, we notice that with the Step feed they maintain healthy weight, and muscle structure, especially during rigorous competition.



Jessie Prpich - Junior Nations Cup

Taylor Frain, Saskatoon, SK

I was lucky enough to be one of the participants in the GenAPro testing procedures. The convenience of this feed is great for both horse and rider! My horse Zee has never looked better! The team at Trouw Nutrition did a great job putting together this feed that perfectly suits any horse!



Zee

Mareesa Kelly - Maple Ridge, BC

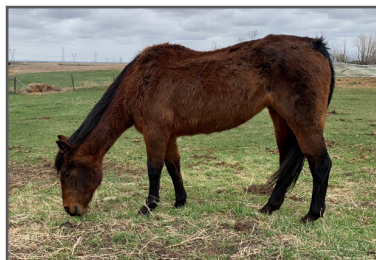
Step Right feeds have been a great addition to my feeding program. Crackers, my adopted OTTB, had some bad luck and required hernia surgery right as our journey began. He lost quite a bit of condition during the recovery period but as I began to introduce Step 8 and Step 2 he started to rebound. Crackers made a full recovery and loves his new job as an eventer. I believe the Step Right Premium Equine Feed program made a difference in the recovery and performance of Crackers. It's true what they say, they have a feed for horses in every stage of life and level of activity.



Mareesa with Crackers

Chris Campbell - High River, AB

We have a number of working ranch horses to maintain, so we use a variety of the Step Feeds. This year, heading into the winter, Pocco was showing her age at 28 years old, and we weren't sure if she was going to make it through. She had pulled off hay at one point and if it wasn't for Step 6 and Step 8, I don't think she would have come out the other side as great as she did. She is back in with the herd and looking as good as ever.



Pocco

We would love to hear from you, our customers! Send us your success story and we just might feature it, on our Facebook page (@TrouwNutritionCanada.HiProFeeds) and in an upcoming guide.

Notes:



Notes:



Step Right

Premium Equine Feed®



There's more than one way to love your horse.

Step Right Premium Equine Feed® offers a diverse line of textured, pelleted and extruded products for horses no matter their stage of life or level of activity. Every bag delivers high quality ingredients combined with science-based nutrition that will optimize the performance of your horse. Available at your local Hi-Pro Feeds® dealer.

trounutrition.ca

